

【Product Name】

Generic name: Disposable virus sampling kit (Inactivated type)

Model No: MDK-96-MH-10(95)-3-T

【Expected Use】 For sampling collection, transportation and storage

【Main Constituent】

Purified Water, Sucrose, Glycerol, Guanidine Thiocyanate, Sodium Citrate, Sodium Chloride, Sodium Lauroyl Sarcosinate, Glucose

【Storage conditions & shelf life】 Room Temperature, valid for 24 months.

【Sample Requirements】

- 1.Applicable sample types: pharyngeal swab, nasopharyngeal swab, saliva, sputum and other clinical samples;
- 2.Storage and transportation of samples: please pay attention to the storage period when using. Samples should be transported to the corresponding laboratory after collection, and store in the room temperature for 3-7 days; If the samples can not be sent to the laboratory after collecting the sample in 7 days, they should be stored at -80°C or below. Repeated freeze-thaw of specimens should be avoided.

【Specifications and Models】

Type	Type Name	Volume of sampling tube	Construction
Type A	MVTM-2A	2ml	It is composed of the tube with 1ml solution, and the swab
Type A	MVTM-5A	5ml	It is composed of the tube with 3ml solution, and the swab
Type A	MVTM-10A	10ml	It is composed of the tube with 3ml solution, and the swab
Type B	MVTM-2B	2ml	It is composed of the tube with 1ml solution, without the swab
Type B	MVTM-5B	5ml	It is composed of the tube with 3ml solution, without the swab
Type B	MVTM-10B	10ml	It is composed of the tube with 3ml solution, without the swab

【Method of application】

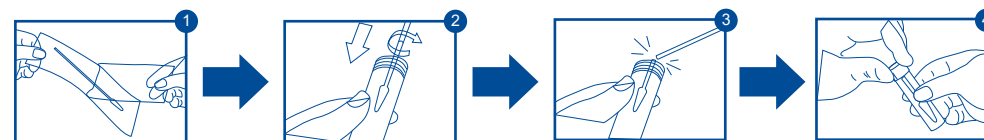
- 1.According to the sampling requirements, collect samples with a sampling swab.
- 2.Place the swab after the collected sample into the sampling tube.
- 3.Break the swab at the easy break cut point of the swab rod and discard the tail.
- 4.Tighten the sample tube lid.
- 5.Label the information as required on the label of the sampling tube.
- 6.Samples should be transported to the corresponding laboratory after collection, and store in the room temperature for 3-7 days; If the samples

can not be sent to the laboratory after collecting the sample in 7 days, they should be stored at -80°C or below. Repeated freeze-thaw of specimens should be avoided.

7. Specific sampling methods can refer to the following:

- 1.) Pharyngeal swab specimens: swab the posterior pharyngeal wall and tonsils on both sides with special sampling swab. Avoid touching the tongue; Rapidly dip the swab head into the sample solution, Break the swab at the easy break point of the swab rod and discard the tail.
- 2.) Nasal swab specimen: with a special sample swab, gently insert the swab head into the nasopalatine in the nasal canal, stop for a moment, then slowly rotate to exit; Quickly dip the swab head into the sample solution, break the swab at the break point of the swab rod and discard the tail.

【Operational Process】



- 1.Open the package
- 2.After sample collection put it in the tube
- 3.Swab along the pipe mouth break point, break off the excess handle and leave the brush head in the sample tube
- 4.Tighten cap and mark

【Notes】

- 1.This product is disposable, please do not use it many times.
- 2.Please use it under the guidance of medical staff.
- 3.This reagent is used for in vitro diagnosis, not for internal or external use in humans or animals. Serious events can result if swallowed. Has certain irritant to the eye and the skin, if accidentally splashes into the eye with clean water. Ventilation should be maintained when using.
- 4.The solution is red or colorless, transparent and precipitation-free. If the property changes, such as the color turns yellow, it is forbidden.
- 5.Freshly collected specimens can be transported to the laboratory at room temperature in 3-7 days (it is better to put ice packs in the transportation)
- 6.If the samples can not be sent to the laboratory after collecting the sample in 7 days, they should be stored at -80°C or below.



MEDICO TECHNOLOGY CO., LTD
Add: Room 201 of Building 14th and Building 17th, Hengyi Lane, Yuanhu Road, Zhangbei Industrial Park, Longcheng Street, Longgang district, Shenzhen, Guangdong, China
TEL : (86) 0755-28997664 FAX : (86) 0755-28646977
Web: www.medicoswab.com E-mail: info@medicoswab.com