

What does the self test look like?

The kit is about 16 cm in length and consists of a protective tube with wings. Within the casing is a yellow rotator at one end and a white soft foam brush at the other.

MEDICO TECHNOLOGY CO., LTD.

No.10, Baolong 5th Road, Tongle Community, Baolong Street, Longgang District, Shenzhen, 518172

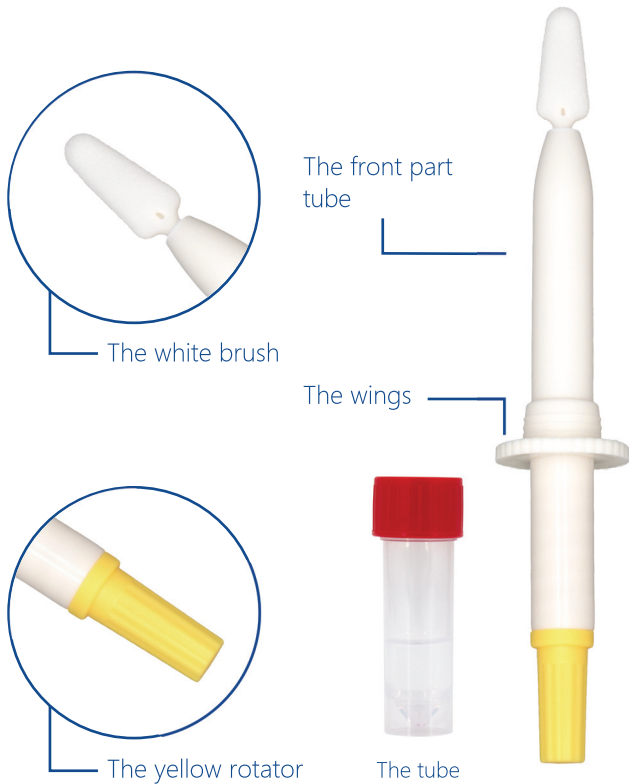
Tel: +86(0)755-28997664

E-mail: info@medicoswab.com

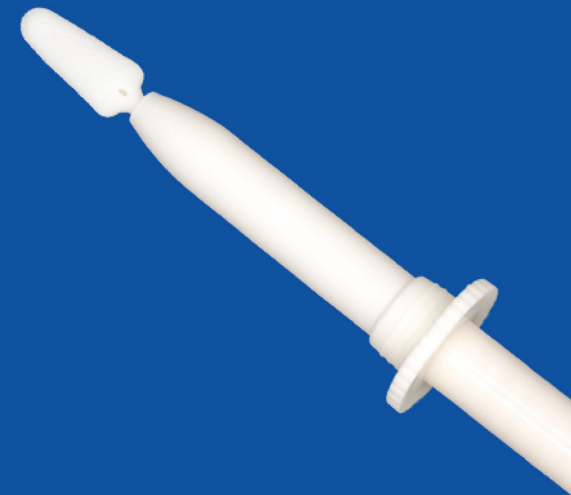
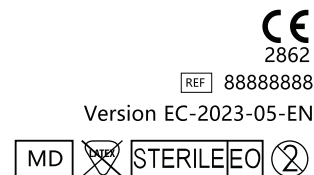
Web:www.medicoswab.com



Instructions For The Home Test



MEIDIKEGENE
VAGINAL SELF COLLECTION KIT
AT HOME



The self home test for vaginal specimen collection allows you to carry out tests yourself at home easily. Using the tool, you can retrieve vaginal cell material simply and painlessly. This cell material is then analysed in a professional laboratory.

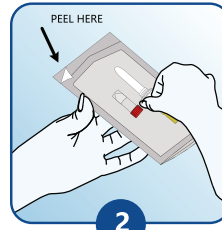
Important Notes

- Do not use if the packaging of the kit is damaged or if the expiry date has passed.
- Do not use during menstruation.
- Do not use during pregnancy or for three months following pregnancy.
- Do not use any other vaginal products for at least two days before using the kit. Vaginal contraceptives, condoms and water-based lubricants can be used as normal.
- For single use only.
- Re-use can result in infection and/or incorrect diagnosis.

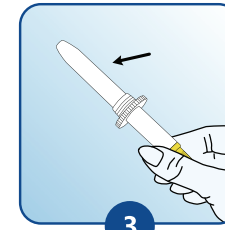
QR
CODE



1
Wash your hands before usage.



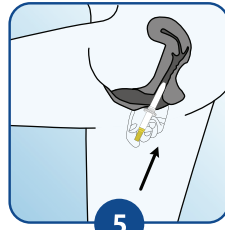
2
Remove the collection kit from the packaging.



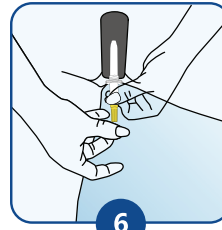
3
With your thumb and index finger to hold on the end. Ensure that you do not touch the front part tube of the kit



4
Obtain the sample whilst in a standing position. Assume a comfortable stance (e.g. as if you were about to insert a tampon).



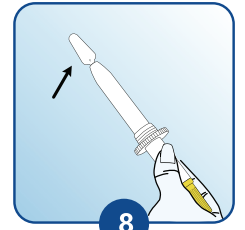
5
Spread your labia with one hand, and with the other, insert the collection kit into your vagina until the wings touch your labia.



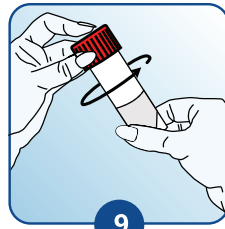
6
Hold the end tube with one hand, and with your other hand, using your thumb and index finger to screw the yellow rotor.



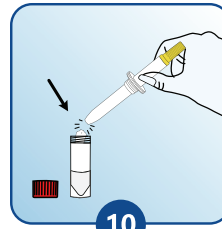
7
When it can no longer operate, carefully remove the collection kit.



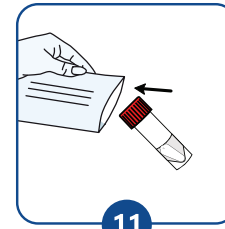
8
Hold the collection kit with one hand, and with your other hand, please take out the tube with preservation liquid. When doing so, do not touch the top part of the kit above the wings.



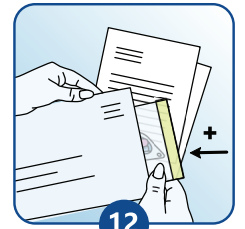
9
Screw the cap the tube, and put it on the table that Ensure that the liquid in the tube does not spill



10
Put the collection kit head inside the tube, and break it.



11
Place the packaging containing the tube into the plastic bag provided and seal it.



12
Use the return envelope to send the plastic bag containing the tube together with other required information.